



DISPLAY
CONCEPTS

Just

Refrigerated Snack Showcase

H137 – H120



Features: Refrigerated snack showcase with integrated compressor (remote available upon request). Supporting structure is made from tubular anodized aluminum or wood, depending on model, with adjustable feet. Front panel black lacquered tempered glass or medium density board painted in RAL colors (optional). Enbloc display top in stainless steel with Scotch-brite finish. Polyurethane insulation. High/low tempered glass with aluminum side uprights. LED lighting on uprights and top. Rear of cases closes with Plexiglas panels sliding on rails. Static refrigeration system with capillary tube (with integrated compressor) or thermostatic valve (remote compressor). Automatic defrost with electric heating element in the condensate evaporator and defrost end probe. Control panel with electronic thermostat. Condensation prevention system on glass with panel-controlled heating element.

BASIC REFRIGERATED –STATIC SHOWCASE

Operating temperature +32°F/+41°F (3°C/+7°C)

Climate Class 3 (25° C- 60% R.H.)

Relative Humidity 55% -60%

Structure: polished tubular aluminum and stainless

Display surface: Stainless steel

Glass panels: tempered

Front & side base panels: black lacquered glass or optional board in a variety of RAL colors

Compressor: available integral or remote

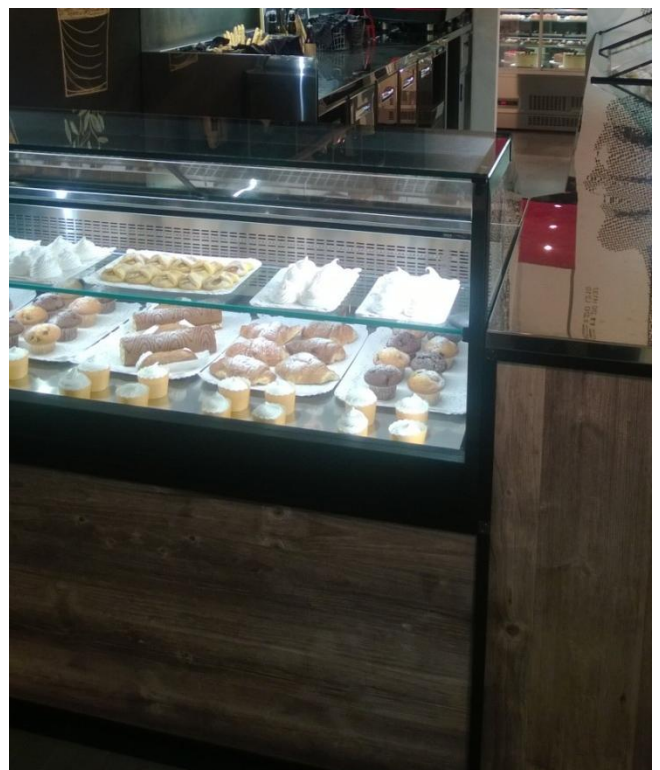
Defrosting: automatic

Rear enclosure: Plexiglas sliders on rail

Lighting: high luminosity LED

Electric: 220V 15A 1Phase

Plumbing: none required



info@fmdisplayconcepts.com
800-889-3975
www.fmdisplayconcepts.com

Just

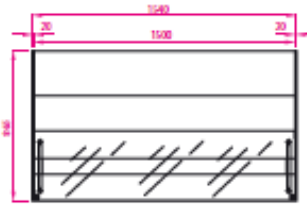
Refrigerated Pastry Showcase



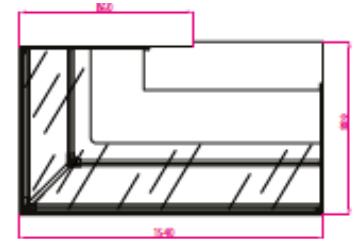
DISPLAY
CONCEPTS



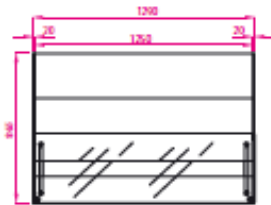
2000



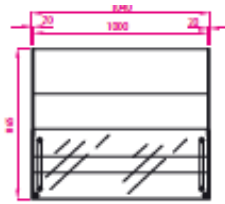
1500



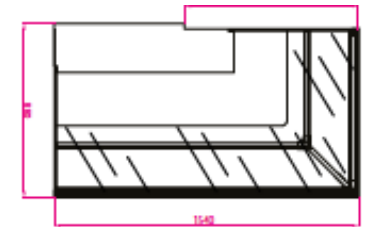
VETRINA FREDDA CORNER 90° SX OPERATORE



1250



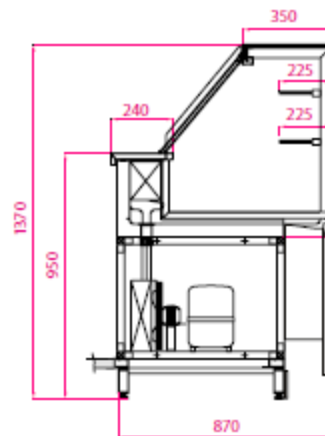
1000



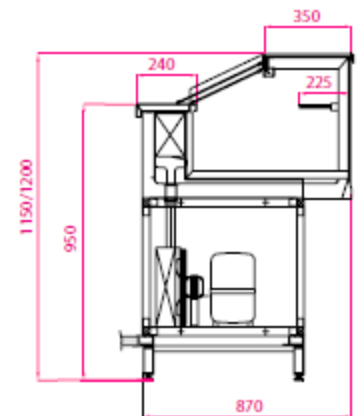
VETRINA FREDDA CORNER 90° DX OPERATORE

Feature	inches	mm
Depth (All)	33.9	860
Height (H120)	47.2	1200
Height (H150)	59.1	1500
Length (1000)	40.9	1040
Length (1250)	50.8	1290
Length (1500)	60.6	1540
Length (2000)	80.3	2040
Corner 90° SX	60.6	1540
Corner 90° DX	60.6	1540

H137



H120



frigomeccanica
Arredamenti Bar

ETL LISTED
 US
 SANITATION LISTED
 Intertek Intertek
 3094110
 CONFORMS TO UL STD 471; NSF STD 7
 CERTIFIED TO CAN/CSA C22.2 STD No. 120

